

# Norway in a Nutshell®

Experience The World Famous Flam Railway  
With a Cruise on the Sognefjord

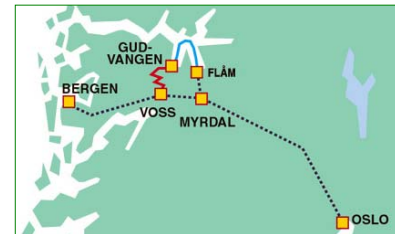
"The Flåm Railway is the most thrilling train ride in Scandinavia, and possibly the world."

- Frommer's Publishing



The **Flåm Railway**, the highlight of **Norway in a Nutshell®**, is an incredible journey by rail from *Myrdal stasjon* on the rail line from Oslo to Bergen. The *Flåm Railway* descends past some of Norway's wildest scenery to *Flåm stasjon* (station) on the *Aurlandfjord*. The *Flåm Railway* is one of the world's steepest rail lines of standard gauge with a 5.5% gradient for 10 of the line's 12 miles the train descends, dropping from an elevation of 2,844 feet to sea level.

**Norway in a Nutshell®** takes you through some of Norway's most beautiful fjord scenery by way of the scenic Bergen Railway, the breathtaking **Flåm Railway**, the *Aurlandsfjord*, the narrow *Næroyfjord* (now included on UNESCO's World Heritage List) and the steep hairpin bends of *Stalheimskleiva*.



## About the towns and stations on Norway in a Nutshell®



**Myrdal stasjon** (left) is located along the *Bergensbanen* railway line in Aurland municipality in *Sogn og Fjordane*, Norway. The station is located between two tunnels on *Bergensbanen*, the *Gravahals Tunnel* to the west and *Vatnahals Tunnel* to the east. The 3 mile long *Gravahals Tunnel* was completed in 1905. **Voss** (right) is centrally located between the two most famous Norwegian fjords, the *Hardanger fjord* and the

*Sognefjord*, surrounded by snow-capped mountains, forests, lakes and fast flowing white-water rivers. The people of Voss make their living mainly from agriculture and tourism, including skiing, water sports, skydiving, paragliding and other adventure sports. **Bergen**, (left)



Norway's second largest city, was founded in 1070 A.D. by king Olav Kyrre, son of Harald Hardråde. Bergen's economy after the Viking era was based in the trade of dried cod, which started around 1100 AD. Today, Bergen's old quayside, *Bryggen*, is on UNESCO's list of World Heritage sites.<sup>1</sup>



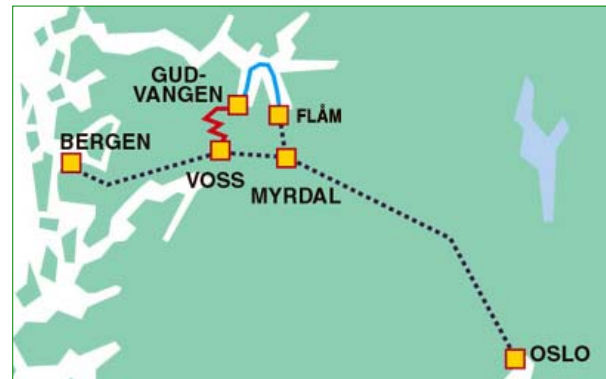
1. UNESCO, the United Nations Educational, Scientific and Cultural Organization, works to identify, protect and preserve world cultural and natural heritage through an international treaty adopted in 1972.

## Norway in a Nutshell® Itineraries

You have five Norway in a Nutshell® itineraries to choose from, all include the Flåm Railway:

	From	To	Time of travel
1.	Voss	Voss	5 hours
2.	Bergen	Bergen	7 hours
3.	Oslo	Voss Bergen	10 hours
4.	Oslo	Voss Oslo	15 hours
5.	Oslo	Voss Bergen Oslo	17 hours

With itineraries 4 and 5 we suggest an overnight in the city of your choice. See below for booking details.



## Itinerary timing

Voss - Voss		Bergen - Bergen		Oslo - Voss - Bergen		Oslo - Voss - Oslo		Oslo-Voss-Bergen-Oslo						
T	Voss - Myrdal	1 hr	T	Bergen - Myrdal	2 hrs	T	Oslo - Myrdal	5 hrs	T	Oslo - Myrdal	5 hrs	T	Oslo - Myrdal	5 hrs
T	Myrdal - Flåm	1 hr	T	Myrdal - Flåm	1 hr	T	Myrdal - Flåm	1 hr	T	Myrdal - Flåm	1 hr	T	Myrdal - Flåm	1 hr
F	Flåm - Gudvangen	2 hrs	F	Flåm - Gudvangen	2 hrs	F	Flåm - Gudvangen	2 hrs	F	Flåm - Gudvangen	2 hrs	F	Flåm - Gudvangen	2 hrs
B	Gudvangen - Voss	1 hr	B	Gudvangen - Voss	1 hr	B	Gudvangen - Voss	1 hr	B	Gudvangen - Voss	1 hr	B	Gudvangen - Voss	1 hr
			T	Voss - Bergen	1 hr	T	Voss - Bergen	1 hr	T	Voss - Oslo	6 hrs	T	Voss - Bergen	1 hr
												T	Bergen - Oslo	7 hrs
<b>Total</b>		<b>5 hrs</b>	<b>Total</b>		<b>7 hrs</b>	<b>Total</b>		<b>10 hrs</b>	<b>Total</b>		<b>15 hrs</b>	<b>Total</b>		<b>17 hrs</b>

**Transportation codes:** T = Train F = Ferry B = Bus

Subject to change

## Terms, Conditions & Booking Rules

- Stopovers permitted
- If traveling with a rail pass that includes Norway:
  - The trip between Oslo and Bergen by rail is covered. Clients need only purchase the Voss - Voss Norway in the Nutshell itinerary.
  - Note that Flåm to Gudvangen by boat, Gudvangen to Voss by bus and between Myrdal and Flåm is not fully covered by any railpass.
  - Customers holding a railpass covering Norway receive a 30% reduction from Myrdal to Flåm on the Flåmsbana private railroad, but must purchase the ticket locally.
- Child Policy
  - Discounted fare for children ages 4 to 15
  - Children under age 4 free
- Travel must begin within 2 months of date of purchase. Once started, travel must be completed within 2 months.
- Reservations are not included. No reservation necessary on the Expressboat - ferry.
- Tours not offered December 24 to 26, 31 and January 1.
- Reservations for Norway in a Nutshell® can only be made on the train and are only needed for the following:
  - Oslo to Myrdal and vice versa.
  - Oslo to Voss and vice versa.
  - Oslo to Bergen and vice versa.
- Customers taking the traditional trip from Oslo to Bergen only need reservation from Oslo to Myrdal. Clients returning back to Oslo to Bergen, will need a reservation for the return train trip.

For information and reservations, please see your professional travel agent.

Agency label or business card here

USTOA  
Traveler Assistance  
logo here

**Avanti**<sup>TM</sup>  
DESTINATIONS  
The Leader for Independent Travel