



DAY 1 - MONDAY
am – Baltra Airport

Departure from Quito or Guayaquil to Baltra Island (2 ½-hour flight). Arriving in the Galapagos, passengers are picked up at the airport by our natural guides and taken to a ten-minute bus drive to the pier to board the M/V Galapagos Legend.



pm – Black Turtle Cove (Santa Cruz Island)

On the north shore of Santa Cruz Island, accessible only by sea, four species of mangrove crowd and form an internal lagoon, turtles visit the calm waters, peaking their heads above the surface while fish, rays circle below. White-tipped reef sharks can be seen beneath the boat, plus sea birds, including pelicans, herons and egrets. This cove has been declared as a "turtle sanctuary".

Difficulty level: easy
Type of terrain: none
Duration: 1-hour dinghy ride



DAY 2 - TUESDAY
am – El Barranco, Prince Philip's Steps (Genovesa Island)

Be marvelled at the variety of sea life that uses the crevices of the lava cliffs for shelter. Red-billed Tropicbirds fly overhead, switching between their nests and the bay, and a small colony of fur seals may be found near the landing site. You will be dropped off at a steep stairway that begins on rocks at the foot of a path that leads through a seabird colony full of Nazca and Red-footed Boobies. At the plateau, the trail continues inland allowing you to see more nesting booby colonies in the thin Palo Santo forest. Near the end of the trail, over a rocky lava plain, Wedge-rumped Storm-Petrels can be observed flying in all directions. If you are lucky, you may catch a glimpse of a Short-eared Owl.

Difficulty level: moderate
Type of terrain: rocky – lava
Duration: 45-minute walk



pm – Darwin Bay

Disembark onto a small sand and coral beach. A short trail heads west along a tidal lagoon and then up a rocky hill that leads to a point overlooking the cliffs and Darwin Bay. Along the trail near the tidal lagoon, visitors will see pairs of Swallow-tailed Gulls, Lava Gulls, Yellow-crowned and Lava Herons. The trail continues through Palo Santo trees, Opuntia cacti, and Saltbushes inhabited by Great Frigate birds and Red-footed Boobies. This is one of the few places in the islands where visitors are guaranteed to see Red-footed Boobies. It is estimated that more than 200,000 Red-footed Boobies live in the trees and bushes of Genovesa.

Difficulty level: moderate
Type of terrain: Sand & Lava
Duration: 2 ½-hour walk approx / Snorkeling





DAY 3 - WEDNESDAY
am – Dragon Hill (Santa Cruz Island)

Dry landing. Walk by a brackish lagoon to see flamingos. The trail leads across typical dry zone vegetation. Keeping up until Dragon Hill, see an important nesting ground for endemic land iguanas, offering lovely views of the anchored boats and neighboring islands. The forest is home to mockingbirds, Darwin's finches, yellow warblers, and Galapagos doves.

Difficulty level: intermediate
Type of terrain: rocky
Duration: 2-hour walk



pm – Santa Fe Island

Wet landing. Santa Fe shows white sand beaches surrounded by sea lion colonies; through the island path, an endemic cactus forest is passed, home the Santa Fe land iguanas (the largest in the islands). This island is the habitat for a number of species, including the Galapagos hawk, Galapagos snakes, rice rats (one of the few endemic Galapagos rodents), a variety of finches and one of the four mockingbird species of the archipelago.

Difficulty level: intermediate
Type of terrain: rocky
Duration: 1 ½-hour walk / 1-hour deep-water snorkeling



DAY 4 - THURSDAY
am – Bachas Beach (Santa Cruz Island)

Wet landing. On the north side of Santa Cruz; behind the beach lies two small flamingo ponds were iguanas sunbathe, see coastal birds, Darwin finches, mockingbirds, and gulls, as well as interesting native vegetation like red and black mangrove, salt bushes. This beach is one of the main sea turtles nesting sites in the Galapagos. A turtle can lay eggs 3 or 4 times per season with an average of 70 eggs each time. At this paradisiacal site, we will also find the remains of barges that sank a long time ago, when the United States Navy operated a base during World War II on Baltra Island. Local people modified the word barges to "Bachas".

Difficulty level: easy
Type of terrain: sandy
Duration: 1-hour walk / 1-hour snorkeling / beach time

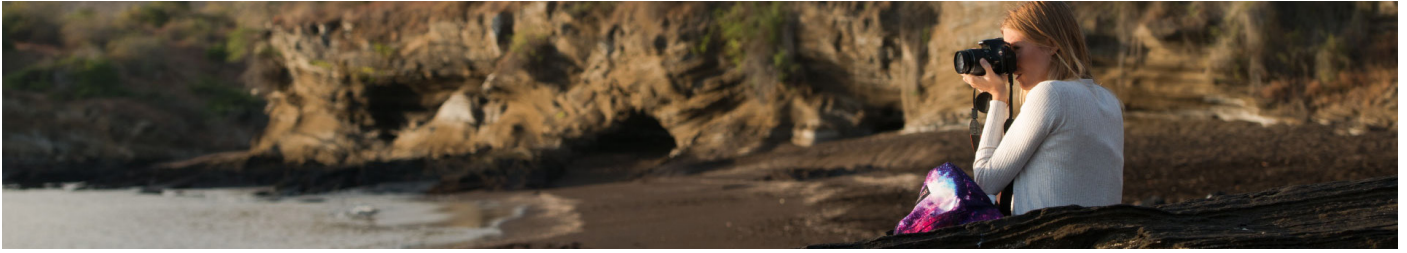


pm – Mosquera Islet

Wet Landing. Mosquera Islet is located between North Seymour and Baltra Island. This flat, sandy island has a large colony of sea lions. It is also an excellent site to observe shorebirds such as herons and lava gulls. There is no trail on the islet, the visitor can enjoy the open area. Most of the islet is covered with sand and barren lava rock. Very little sesuvium portulacastrum plants grow on the sand.

Difficulty level: easy
Type of terrain: sandy
Duration: 1 ½-hour walk & snorkeling





DAY 5 - FRIDAY
am – Egas Port (Santiago Island)

Wet landing. Egas Port is a black volcanic sand beach, visited by Darwin in 1835. The first section of the trail is formed of volcanic ash (eroded tuff) and the other half is an uneven terrain of volcanic basaltic rock. The unique, truly striking layered terrain of Santiago shore is home to a variety of animals including the bizarre yellow-crowned night heron and marine wildlife including lobster, starfish and marine iguanas grazing on algae beds alongside Sally light-foot crabs. It is easy to see colonies of endemic fur seals swimming in cool water volcanic rock pools.

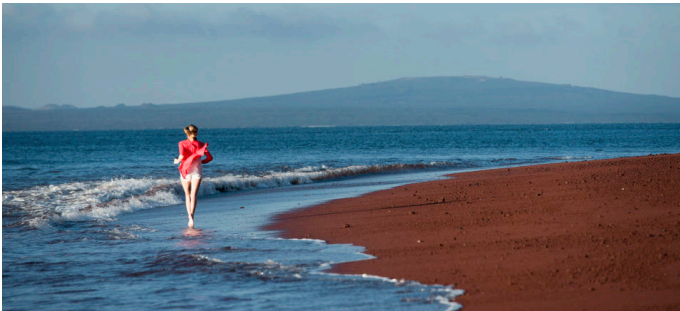
Difficulty level: intermediate
Type of terrain: flat & semi-rocky
Duration: 1 ½-hour walk / 1-hour snorkeling



pm – Rabida Island

Wet landing. Dark-red sand covers the unique beaches of this island, home of sea lions colonies; Rabida is considered the epicenter of the Galapagos Islands due to the diversity of its volcanic geology. Nesting brown pelicans are found from July through September plus nine species of the famous Darwin's finches. Here a dinghy ride along marine cliffs is done, to observe nesting seabirds. Snorkel off the coast, where marine life is particularly active.

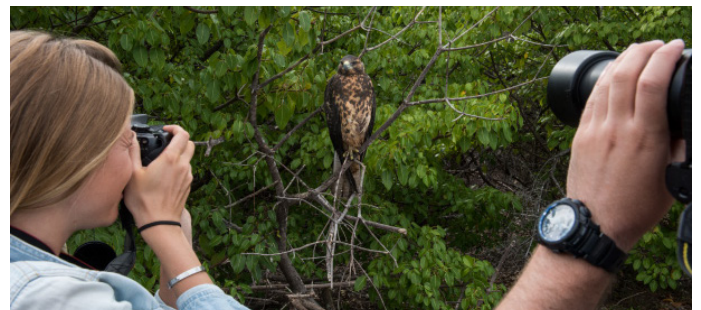
Difficulty level: easy
Type of terrain: sandy
Duration: 1 ½-hour walk / 1-hour snorkeling / 1-hour dinghy ride



DAY 6 - SATURDAY
am – Urbina Bay (Isabela Island)

Wet landing (might be difficult due to the tide). Volcanic black beach, depending on the season, it is possible to find giant tortoises, land iguanas, and the unusual flightless cormorant. After a short walk inland it's snorkeling time, a chance to swim with sea turtles, sea lions, and countless tropical fish. Urbina Bay features a wide variety of plants with the different range of colors in flowers, attracting different insects, birds, and reptiles. One of the highlights of the island is the uplifted coral reef that resulted from the 1954 seismic activity; here the views of Alcedo Volcano are remarkable. When navigating from Urbina to Tagus Cove whale watching is usual in May – December.

Difficulty level: intermediate
Type of terrain: flat & rocky
Duration: 1 ½-hour walk / 1-hour snorkeling

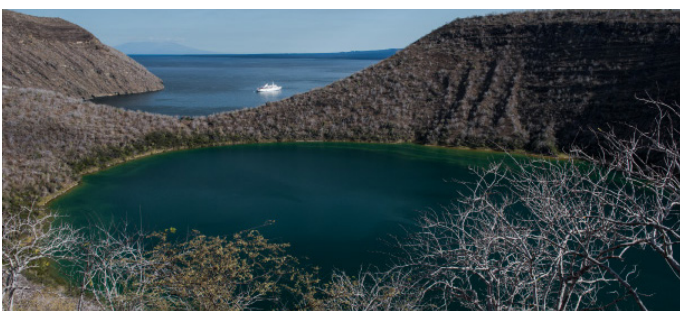


pm – Tagus Cove (Isabela Island)

Dry landing on Galapagos' largest island where we will learn about the eruption of the five volcanoes that form it. The trail leads to Darwin's salt-water crater lake and excellent views of lava fields and volcanic formations. We will return by the same path for a dinghy ride along a shoreline full of marine wildlife, where we will admire a variety of seabirds, such as Blue-footed Booby, Brown Noddy, terns, Flightless Cormorant and depending on the season, a large number of Galapagos Penguins which are only 35 cm tall: the only penguin species in the world to live in the tropics.

The population of penguins on the islands is about 2,000 individuals, most of which live on this western portion of Isabela; others are scattered further south. We will have an opportunity to snorkel in deep water. Graffiti believed to have been left by 19th-century pirates is a curious reminder of an intriguing past.

Difficulty level: intermediate/difficult
Type of terrain: steep/steep
Duration: 2-hour walk / 40-minutes dinghy ride / 1-hour deep water snorkeling





DAY 7 - SUNDAY
am – Espinosa Point (Fernandina Island)

Dry landing. From Espinosa Point, is possible to admire a wide view of Isabela Island across the Bolivar Channel, an area that boasts some of the highest diversity of endemic sea fauna in the Galapagos. Here the largest, most primitive-looking marine iguanas are found mingling with sea lions and Sally Lightfoot crabs. Fernandina displays a wonderful opportunity to encounter flightless cormorants at their nesting sites, Galapagos penguins and the “King” of predators on the islands, the Galapagos hawk. Pa-hoe-hoe and AA lava formations cover the majority of Fernandina terrain. Vegetation is scarce inland, with few brachycereus cacti. In the shore mangrove can be found.

Difficulty level: intermediate
Type of terrain: flat/semi rocky
Duration: 1 ½-hour walk / 1-hour snorkeling



am – Vicente Roca Point (Isabela Island)

Great deep-water snorkeling at one of the richest marine havens on Earth, the Bolivar Channel. Accessible by water, we take a dinghy ride along the coast to observe a great diversity of sea and coastal birds; Nazca and blue-footed boobies, noddies, brown pelicans, penguins, flightless cormorants. The upwelling of cold water currents in this part of the Galapagos gives rise to an abundance of marine life, a perfect place for deep snorkeling.

Difficulty Level: moderate / high
Type of terrain: water
Duration: 1-hour snorkeling / 1-hour dinghy ride



DAY 8 - MONDAY
am - Pit Craters (Santa Cruz Island)

The Pit Craters, geologically speaking, were not directly formed by volcanic action. They were created as a result of the collapse or sinking of surface materials into cracks or manholes. It's a great place to spot vermilion fly catchers as we walk inside an endemic Scalesia forest. Great opportunity to observe giant tortoises.

Type of Terrain: Flat, sometimes the trails can be muddy.
Difficulty level: Easy
Duration: 45-minutes drive / 1 ½-hour hike



pm – Baltra Airport

After the visit, passengers will be transferred to the airport for their return flight to Guayaquil or Quito.