

# The Galapagos Islands

## DAY BY DAY

# ITINERARY C+D

8 days – 7 nights

Our Galapagos itineraries offer unforgettable experiences, with our weekly departures allowing you to experience 3, 4, 7, and up to 14 nights tours including: full board, two daily guided excursions with optional activities such as snorkeling, kayaking, dinghy rides and our new feature daily diving tours for license-holding divers.

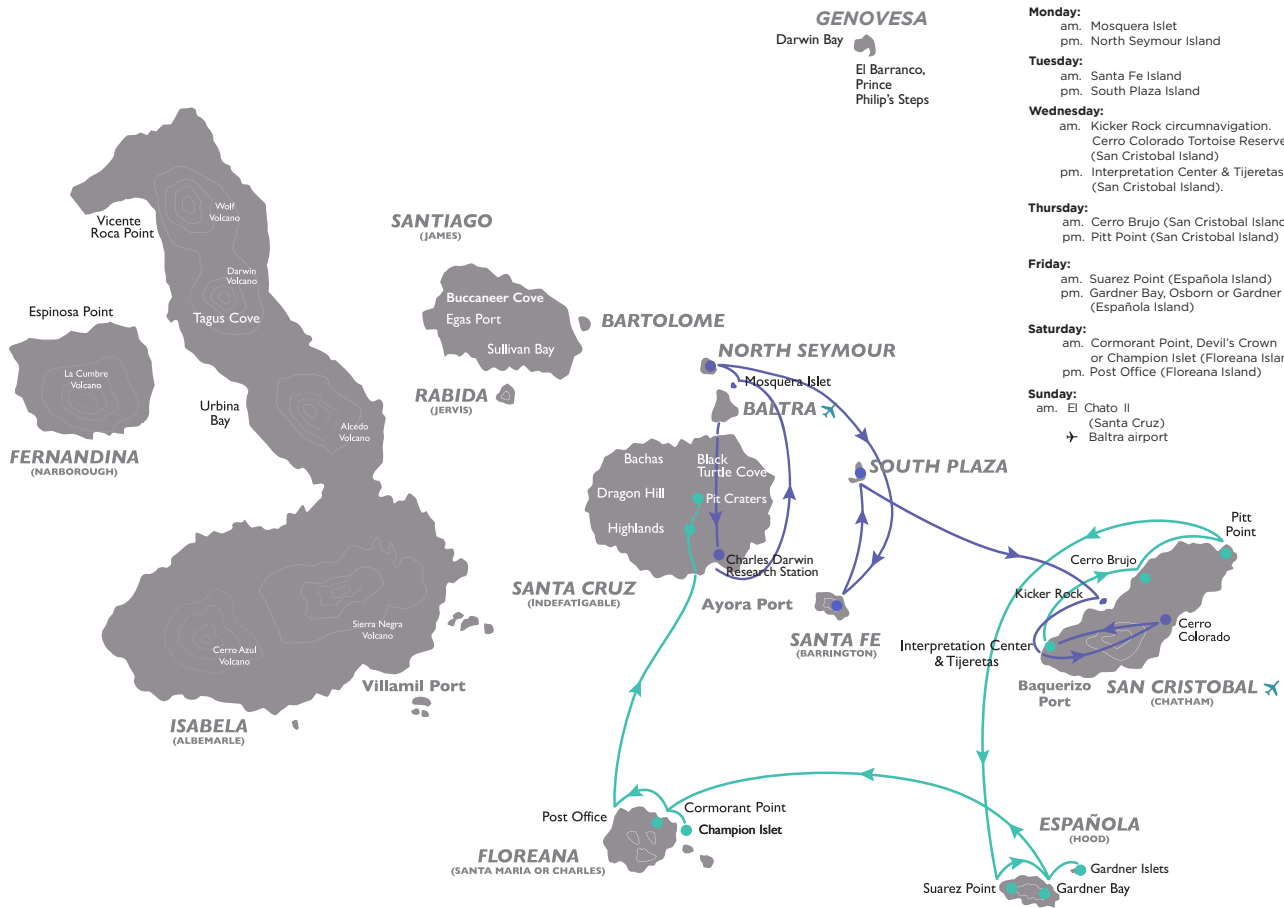
**C**  
EAST

+

**D**  
SOUTH

**8 Days / 7 Nights**

- Sunday:**
  - Baltra Airport
  - pm. Charles Darwin Research Station & Fausto Llerena Breeding Center (Santa Cruz Island)
- Monday:**
  - am. Mosquera Islet
  - pm. North Seymour Island
- Tuesday:**
  - am. Santa Fe Island
  - pm. South Plaza Island
- Wednesday:**
  - am. Kicker Rock circumnavigation. Cerro Colorado Tortoise Reserve (San Cristobal Island)
  - pm. Interpretation Center & Tijeretas (San Cristobal Island).
- Thursday:**
  - am. Cerro Brujo (San Cristobal Island)
  - pm. Pitt Point (San Cristobal Island)
- Friday:**
  - am. Suarez Point (Española Island)
  - pm. Gardner Bay, Osborn or Gardner Islets (Española Island)
- Saturday:**
  - am. Cormorant Point, Devil's Crown or Champion Islet (Floreana Island)
  - pm. Post Office (Floreana Island)
- Sunday:**
  - am. El Chato II (Santa Cruz)
  - Baltra airport





**DAY 1 - SUNDAY**  
am – Baltra Airport

Departure from Quito or Guayaquil to Baltra Island (2 ½-hour flight). Arriving in the Galapagos, passengers are picked up at the airport by our natural guides and taken to a ten-minute bus drive to the pier to board the *M/Y Coral I* or *M/Y Coral II*.



pm – Charles Darwin Research Station & Fausto Llerena Breeding Center (Santa Cruz Island)

Dry landing. We visit the Station where the Galapagos giant tortoise breeding program takes place as part of our efforts to preserve the fragile Galapagos environment and where the famous Lonesome George (the last surviving specimen of his species) lived for decades. Admire a prickly-pear cactus forest and variety Darwin's finches and other land birds. The Darwin Station also works providing environmental education to the communities, schools, and tourists visiting the Galapagos Islands. You will also have some free time to visit the town and shop for souvenirs.

**Difficulty level:** intermediate  
**Type of terrain:** flat  
**Duration:** 1 ½-hour visit



**DAY 2 - MONDAY**  
am – Mosquera Islet

Wet Landing, Mosquera Islet is located between North Seymour and Baltra Island. This flat, sandy island has a large colony of sea lions. It is also an excellent site to observe shorebirds such as herons and lava gulls. There is no trail on the islet, the visitor can enjoy the open area. Most of the islet is covered with sand and barren lava rock. Very little *sesuvium portulacastrum* plants grow on the sand.

**Difficulty level:** easy  
**Type of terrain:** sandy  
**Duration:** 1 ½-hour walk & snorkeling

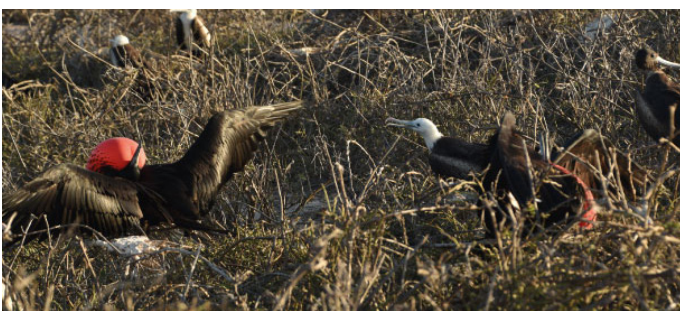


pm – North Seymour Island

Dry landing. This is perhaps one of the busiest tourist destinations on the archipelago. Off of Baltra Island (where the airport is located) and not far from Santa Cruz, North Seymour is the most accessible for day trips out of Santa Cruz's main port, Puerto Ayora.

An approximately two hour walk amidst large nesting colonies of blue-footed boobies\*, magnificent and great frigatebirds,\* and swallow-tailed gulls for an in depth encounter with sea bird breeding cycles and as well as sea lions. You will also encounter sea lions, land iguanas, and on a lucky day, you might even come across a Galapagos Snake.

**Difficulty level:** intermediate  
**Type of terrain:** rocky ground  
**Duration:** 2-hour walk / 30-minute snorkeling







**DAY 3 - TUESDAY**  
am – Santa Fe Island

Wet landing. Santa Fe shows white sand beaches surrounded by sea lion colonies; through the island path, an endemic cactus forest is passed, home the Santa Fe land iguanas (the largest in the islands). This island is the habitat for a number of species, including the Galapagos hawk, Galapagos snakes, rice rats (one of the few endemic Galapagos rodents), a variety of finches and one of the four mockingbird species of the archipelago.

**Difficulty level:** intermediate  
**Type of terrain:** rocky  
**Duration:** 1 ½-hour walk / 1-hour deep-water snorkeling



pm – South Plaza Islet

Dry landing. There are two Plaza Islets (north and south) located east of Santa Cruz Island. On the northern part of the Islet, visitors begin the journey along an impressive cactus forest where colorful yellow and red land iguanas live, the population number is around 300 animals; during the dry season they survive on fruits and flowers of the opuntia cacti. A peculiar thing to see in South Plaza is the hybrid iguana (sea and land). When reaching the highest point, tropicbirds can be seen. During the dry season (June – January) the usually greenish and yellowish vegetation change of color creating a bright red landscape (sesuviumedmonstonei plant).

**Difficulty level:** intermediate  
**Type of terrain:** rocky  
**Duration:** 2-hour walk



**DAY 4 - WEDNESDAY**  
am – Kicker Rock Circumnavigation

Kicker Rock can be seen directly from the vessel. In the sea northeast of Puerto Baquerizo Moreno is this ancient and eroded volcanic tuff lava named Leon Dormido or Kicker Rock it is formed by two rocks approximately 148 m, named for its resemblance of a sleeping lion.

It serves as home to many of the typical Galapagos sea animals, such as birds, sea lions, blue and Nazca boobies and frigate. With rare sightings of swallow turtle gulls, tropic birds, and pelicans.

**Difficulty level:** easy  
**Type of Terrain:** water  
**Duration:** 1-hour circumnavigation

am – Cerro Colorado Tortoise Reserve (San Cristobal Island)

Dry landing in Puerto Baquerizo Moreno. Passengers visit the San Cristobal Giant Tortoise Breeding Center to learn about the National Park's conservation programs. Enjoy a beautiful landscape on the way to the Reserve. Passengers will also have the opportunity to visit the village's port, have a drink or shop for arts and crafts and other souvenirs.

**Difficulty level:** intermediate  
**Type of Terrain:** sandy  
**Duration:** 40-minute bus drive to the Reserve / 1-hour visit



pm – Interpretation Center & Tijeretas Hill (San Cristobal Island)

Dry landing in Puerto Baquerizo Moreno, the capital of the Galapagos Islands. Passengers visit the Interpretation Center, an excellent place to learn about islands' history in The Museum of Natural History which displays information about the volcanic origins of the islands, their remoteness from the continent, ocean currents, climate, the arrival of the different species and their colonization, among other points of interest. The human history is also showcased, chronologically narrating the most significant events related to the discovery and the island's colonization.

**Difficulty level:** easy /intermediate  
**Type of terrain:** flat/stairs  
**Duration:** 1-hour visit / 1-hour walk

Tijeretas Hill involves a high-intensity walk amidst beautiful landscapes and a magnificent view at the foot of a frigate bird nesting colony.

**Difficulty level:** difficult  
**Type of terrain:** Rocky  
**Duration:** 1-hour visit







**DAY 5 - THURSDAY**  
**am – Cerro Brujo (San Cristobal Island)**

Wet landing. Cerro Brujo is an eroding tuff cone that at several locations is composed of AA lava formations and a beautiful white sandy beach, great for snorkeling and sunbathing. There is a lagoon visit where migratory bird species can be seen: Black-necked Stilts, Ruddy Turnstones, Whimbrels, other sandpiper species and White-cheeked Pintails. Cerro Brujo offers beautiful views of Kicker Rock, the southern part of San Cristobal and the vadjacent coast.

**Difficulty level:** easy  
**Type of terrain:** sandy  
**Duration:** 1-hour walk / 1-hour snorkeling



**pm – Pitt Point & Islet (San Cristobal Island)**

Wet landing followed by a high-intensity hike on rocky terrain. The trail includes a 90 meters long, olivine beach and a path that climbs to the top of a volcanic tuff, through several magnificent viewpoints. This is probably the only site where the three booby species of the Galapagos can be seen together, as well as, two species of frigate birds and a sea lion colony. It is also excellent for dinghy rides and snorkeling, where a good range of sea birds can be observed.

**Difficulty level:** difficult  
**Type of terrain:** rocky  
**Duration:** 2½-hour walk/ 40-minutes snorkeling or kayaking



**DAY 6 - FRIDAY**  
**am – Suarez Point (Espanola Island)**

Dry landing. An island of geological interest, being one of the oldest in Galapagos, it has a high percentage of endemism due to its isolation from the rest of the islands. Due to the great variety of wildlife, this is one of the most attractive spots in the Galapagos. Here, it is possible to explore volcanic formations and see large colonies of sea lion and seabirds including the Española mockingbird, Nazca boobies, and the spectacular red-billed tropicbirds. Here, the singular marine iguanas have a turquoise color with reddish parts during the breeding season, lava lizards, and the colorful Sally light-foot crabs. A somewhat lengthy hike brings visitors to nesting grounds that sometimes overlap the trail. Other birdwatchers favorites include the Galapagos dove, the Galapagos hawk, swallow-tailed gulls and the world's largest colony of waved albatross, an unequivocal highlight during mating season (April-December). Admire the island's dramatic backdrop, featuring the famous "Soplador," a seaward blowhole that shoots water up to 23 m. (75 ft.) into the air.

**Difficulty level:** difficult  
**Type of terrain:** rocky ground  
**Duration:** 2 ½-hours walk



**pm – Gardner Bay, Gardner & Osborn islets (Española Island)**

Wet landing on a beautiful white coral sandy beach guarded by a colony of sea lions. There are no trails, so we stay along the shore where we can spot Galapagos hawks, American Oystercatchers, Galapagos Ground Doves, Hood mockingbirds, Yellow Warblers, lava lizards, marine iguanas, and three species of Darwin's finches: a subspecies of the Large Cactus Finch, which is similar to the large ground finch, the Small Ground Finch (*Geospiza fuliginosa*) and the Warbler Finch (*Certhidea Olivacea*), another endemic subspecies. Swimming and snorkeling offer a great variety of the Galapagos' marine wildlife: king angelfish, Creole fish, damsel fish, parrotfish, manta rays, and white-tipped reef sharks.

**Difficulty level:** easy  
**Type of terrain:** sandy  
**Duration:** 1-hour walk / 1-hour snorkeling







**DAY 7 - SATURDAY**  
**am – Cormorant Point / Devil's Crown / Champion (Floreana Island)**

Wet landing, on an olivine green, sanded beach. We hike from the black mangrove beds to a brackish lagoon, which usually holds one of the largest flamingo populations in the Galapagos. This island features some endemic plants such as *Scaevola villosa*, white and black mangrove, and holy stick. The trail continues to a beautiful white sandy beach, one of the most important nesting sites of Green Pacific Sea Turtles. It is important to avoid walking in the water due to the Sting Rays that may be hiding in the sand, which can be dangerous if accidentally stepped on. From the beach, one can spot sea turtles, blue-footed boobies plunging into the water, and small reef sharks floating along the shoreline in the search for food.

This coral-sand beach marks the end of our trail, and we head back to the olivine beach we landed on, to swim or snorkel amongst sea turtles, reef fish, sea lions and, on a good day, white-tipped reef sharks. A small colony of penguins resides on Floreana and can sometimes be observed as well.

**Difficulty level:** easy  
**Type of terrain:** sandy & flat  
**Duration:** 1-hour walk / 1-hour snorkeling



**pm – Post Office (Floreana Island)**

Wet landing. Located on the north side of Floreana, the bay was named because in 1793 Captain James Colnett installed a wooden barrel which served as an informal post office for sailors passing through, who would take letters with them back to their destinations. Today, visitors continue the tradition by placing unstamped postcards inside the barrel, hoping that some other traveler, going to the letter destination, will take it back for free. The chances are that the letter posted can take a long time to arrive at its destination. However, there have been cases where it has arrived before the sender.

We may also encounter Darwin's finches, Yellow Warbler and Lava Lizards. Great snorkeling opportunities with Green Pacific Sea Turtles. As well, the island is best known for its endemic vegetation: *Scaevola villosa*, *Lecocarpus Pinnatifidus*, and the Galapagos Milkwort. Snorkelers can practice on the main beach among playful sea lions.

**Difficulty level:** easy  
**Type of terrain:** sandy  
**Duration:** 30-minutes walk / 1-hour snorkeling



**DAY 8 - SUNDAY**  
**am - El Chato II (Santa Cruz Island)**

Dry landing. In the mountains of Galapagos is possible to admire different kinds of birds, such as tree and ground finches, vermilion flycatchers, paint-billed crakes, yellow warblers, and cattle egrets (usually standing on the tortoises' shell). The journey to the reserve offers great opportunities to see the contrasts that the island offers in reference to the variety of ecosystems. The road goes from the coast through the agricultural zone and straight up to the dense humid forests. Often, Galapagos Giant Tortoises are also seen on the way, wandering through pastures in the paddocks. This spot is a bird watchers' haven since almost every land bird present on the island lives or migrates here.

**Difficulty level:** easy  
**Type of terrain:** flat & muddy sometimes (seasonal conditions)  
**Duration:** 45-minute drive / 1 ½-hour walk



**pm – Baltra Island Airport**

After the visit, passengers will be transferred to the airport for their return flight to Guayaquil or Quito.